

**SI 2223**For technical personnel only!
1/1

SERVICE **INFORMATION**

OIL PUMP INSTALLATION – PRECISION IS MANDATORY

IMPROPER INSTALLATION CAN DESTROY THE ENGINE

We are increasingly seeing Pierburg oil pumps for PSA and Stellantis passenger cars that were not installed correctly despite the enclosed fitting instructions.

**NOTE**

Always adhere to the fitting instructions.

If the fitting instructions are not adhered to, in the best case scenario only the oil pump will be damaged; in the worst case, the engine may be completely destroyed due to insufficient lubrication.

Both figures show clear signs of abrasion on the removed oil pumps. Due to missing or faulty centring, the oil pump cants or runs dry without oil. These are clear indications that the centring described in the instructions has not been performed.

This applies in particular to the following oil pumps:

- 7.03903.03.0
- 7.04193.02.0
- 7.07381.03.0
- 7.07381.08.0
- 7.07381.12.0

To install the oil pumps correctly, refer to the fitting instructions for more information on:

- Lubrication
- Fitting tool to align the oil pump
- Tightening sequence and torque for the screws

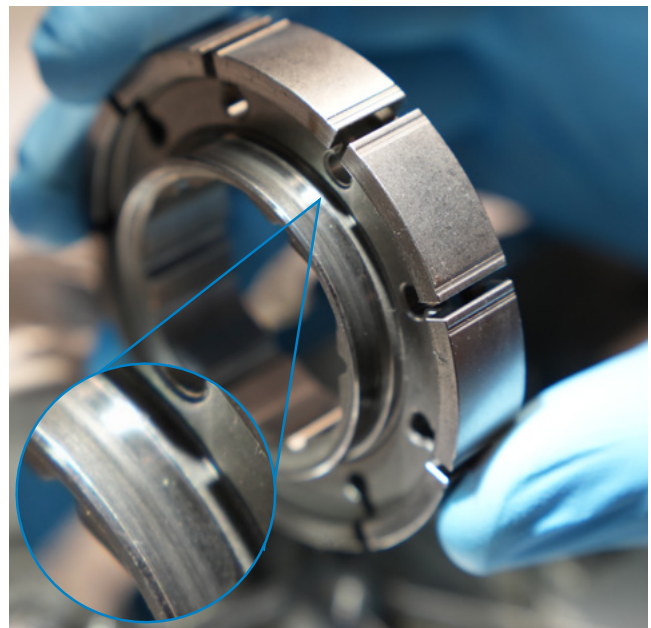


Fig. 1



Fig. 2